

THE  
**HARBOUR**  
PROJECT

Claire Garrett - CEO

21st July 2022

# The Harbour Project – a brief overview

## History

- Founded May 2000 – supporting Kosavan Refugees
- Registered Charity 2003
- Swindon became a Home Office Dispersal Town 2003
- Converted to Charitable Incorporated Organisation 2017



## How we are funded

**Cost base of ~ £310k p.a**

### Main funders:

- National Lottery Community Fund
- Lloyds Banking Foundation
- Swindon Borough Council
- Blagrove Trust
- + around 10 other grants
- + regular donors/ fundraising/ donations

## Who we are

10 trustees

11 members of staff

~ 80 volunteers inc 25 teachers

## Who else we work with

SBC – housing/ school admissions/ safeguarding

Housing Providers

Red Cross

Migrant Help

Schools & Faith Groups

GP Surgeries and other health professionals

Solicitors (Immigration & Public Law)

Nelson Trust/ Liberty Project/ SARC/ SWA/ Medaille Trust) and other charities

CAB

# Our Visitors - Having to flee is the only real thing that our people have in common

## Profile

- 1194 Visitors (0 to 76)
- 229 Children
- 748 adult male
- 217 adult female
- 451 Refugees
- 729 Asylum Seekers
- 14 ARE

## Top Countries (out of 59)

Iran	El Salvador
Iraq	China
Eritrea	Turkey
Ukraine	Namibia
Sudan	Sri Lanka
Afghanistan	Somalia
Syria	Vietnam
Albania	Bangladesh
Ethiopia	Georgia
Pakistan	Libya
Kuwait	India
Nigeria	Chad

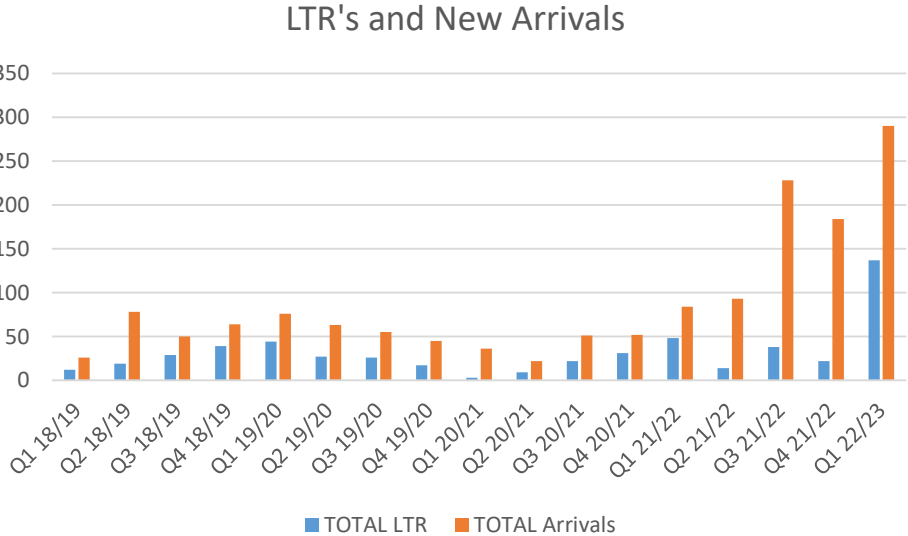
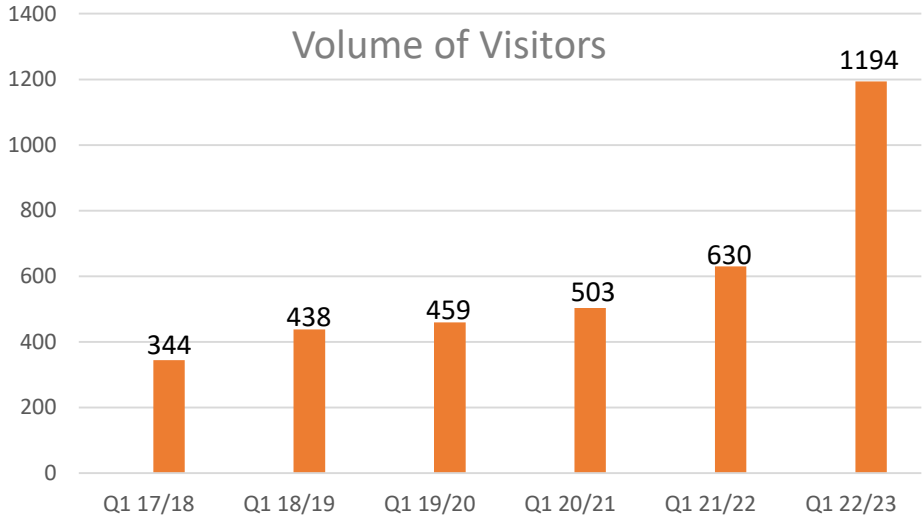


## Cases are rarely straightforward

- DV
- NRM
- LGBTQ
- UASC's

Trauma at 3 levels: whatever caused them to leave their country; their journey; waiting for a decision

# Why have our volumes increased so much over the last few years?



- During the pandemic, people continued to arrive in the UK but the Home Office decision rate in deciding people’s claims almost ground to a halt.
- There are 2 types of accommodation in Swindon for Asylum Seekers:
  - Dispersal Accommodation. Capacity has grown from 200 bedspaces to 350.
  - Initial Accommodation (hotels) opened in autumn 2021 – capacity of 260.
- Hotels in Swindon housing people from Afghanistan.
- Supported 100+ people from Ukraine in last few months.
- Refugees may decide to stay in Swindon and make their home here. + family reunions.

# What we do (and don't do)

## Our Core Activities

- Help & Advice
- English Classes
- Social Space
- Other activities such as piano lessons, trips, cooking, football, youth group

## We're not

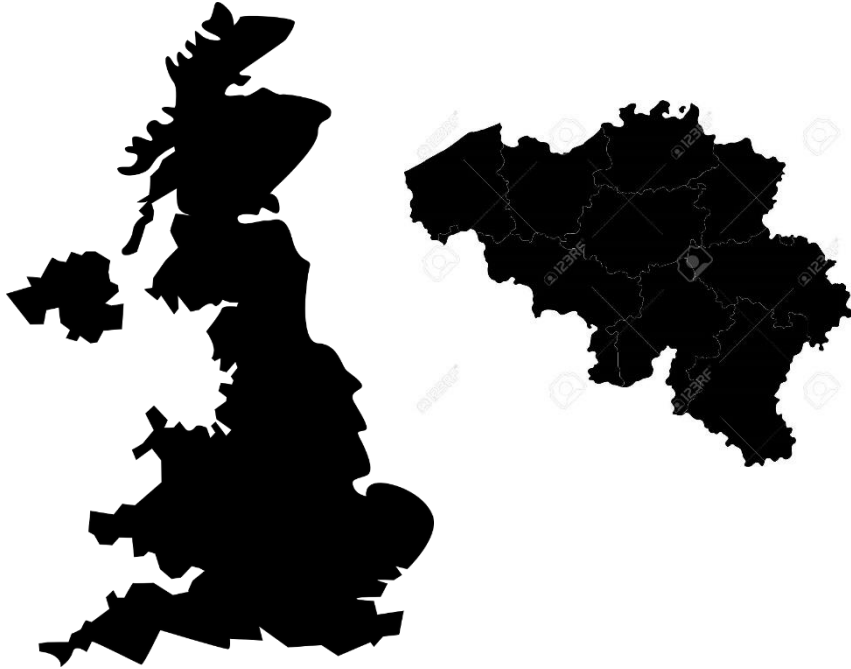
- Solicitors or experts in all aspects of immigration
- The Home Office or Police
- Landlords nor do we provide accommodation
- Here to help improve people's case or coach them on what to say.

What's On This Week	
Monday	English for people at Ibis in main hall
Tuesday	Cafe 11:00-2:00. Barber 10:00-2:00. Youth Group 6-8pm
Wednesday	Womens Group 10:00-11:30 Sewing 12:00-2:00
Thursday	Barber 10:00-2:00 Art group 1:30-2:30
Friday	English for people at Ibis in main hall.
Saturday	Football. St Jos 11-1pm Trip to Syrian Music - Claire Trip to see Animals - Holly



Although Asylum Claims in the UK are back to pre-pandemic levels, we think its important to view UK volumes in the context of global migration volumes.

Population of UK and Belgium =  
80 million



**82.4 MILLION**  
Forcibly displaced people  
worldwide

Population of Belfast =  
635,000



**617,800 asylum applications to  
EU+**

Population of Weston-Super-  
Mare = 77,000

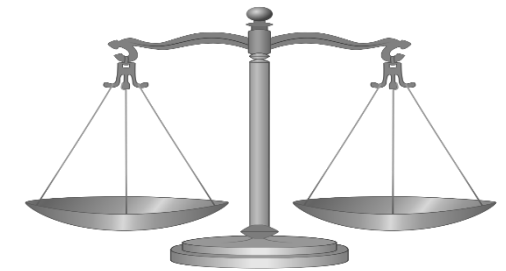


**65,008 asylum applications to the  
UK** (UK are 4<sup>th</sup> – Germany takes 3x more; 9% of  
applications; 18% per head of population)

Population of Calne =  
13,600



**UK offered protection to  
14,734 people.** ~0.3% of UK  
population came as Refugees



**77% offered protection at 1<sup>st</sup>  
decision; 44% of refusals  
overturned at appeal**

# Definitions

## Refugee

*A refugee is a person who 'owing to a well-founded fear of being persecuted for reasons of race, religion, nationality, membership of a particular social group or political opinion, is outside the country of his nationality, and is unable to or, owing to such fear, is unwilling to avail himself of the protection of that country...'*

(UN Convention Relating to the Status of Refugees 1951, Article 1).

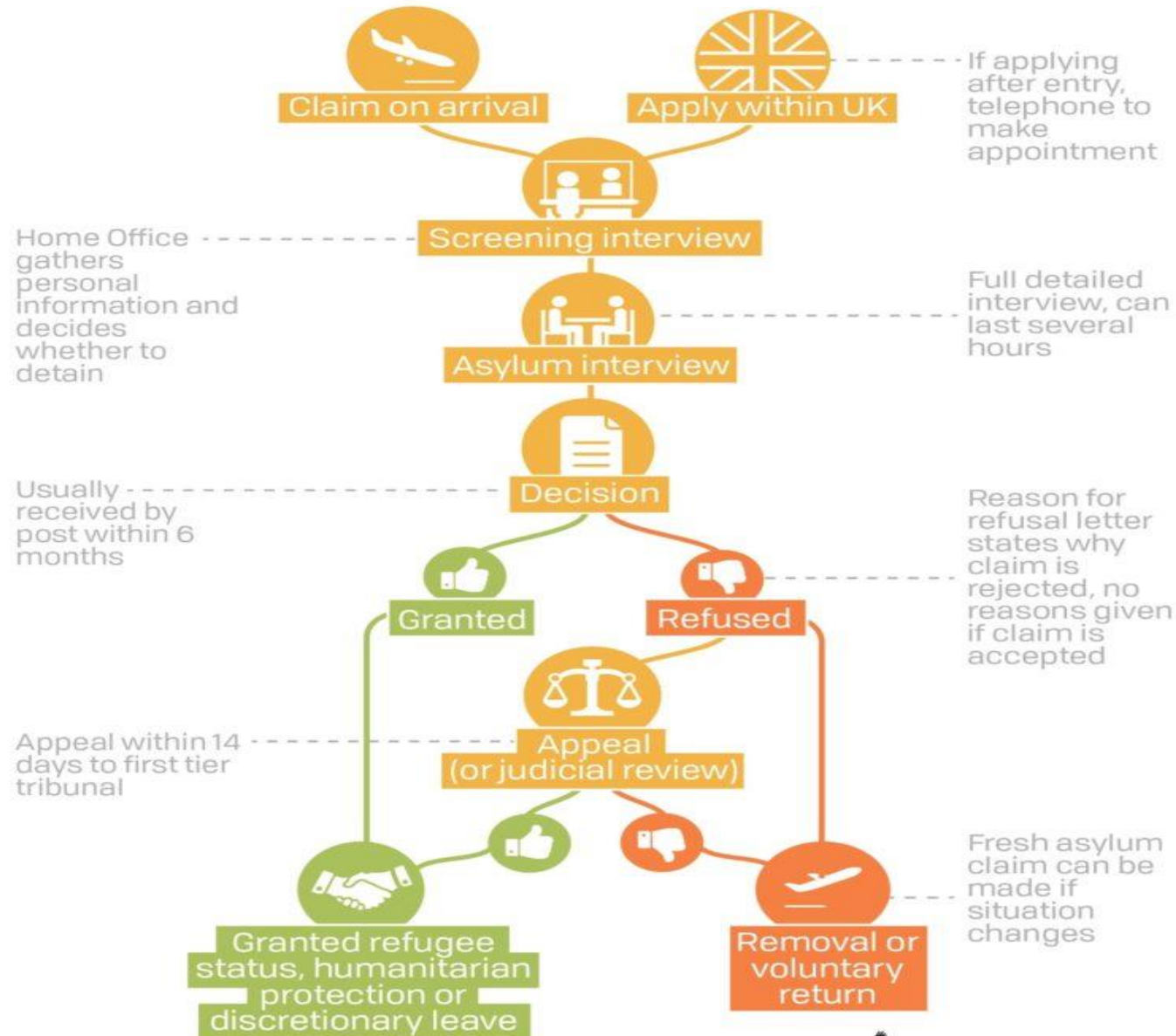
## Asylum seeker

An asylum seeker is a person who has left their country of origin 'owing to a well-founded fear of being persecuted', who has formally applied for asylum in another country and is still awaiting a decision.

# Claiming Asylum

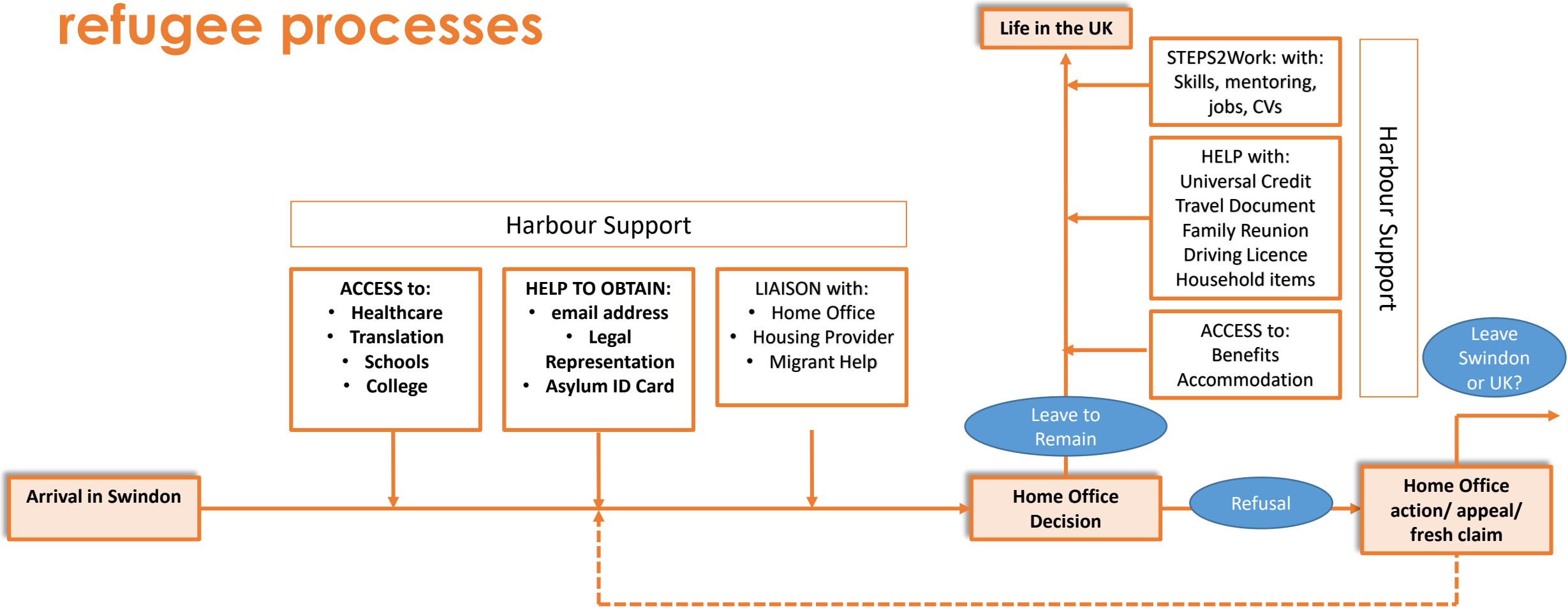
Read more at <https://bit.ly/2KctlwY>

THE  
**HARBOUR**  
PROJECT





# Life cycle of Harbour Support through the asylum and refugee processes



## From start to finish: Harbour Support

- \* English & Other classes
- \* Freeshop
- \* Psychological Support

- \* Destitution Fund
- \* Bicycles
- \* Football

- \* Friendship
- \* Lunch Club
- \* Homework Club

- \* Space to Relax
- \* Social Events
- \* Sewing

- \* Emergency Food
- \* Art/ Music Therapy
- \* Trips

# Asylum Support: Financial Allowances

## Section 95: Asylum Seekers and Asylum Seekers on appeal

- £39.63 cash support a week per person, regardless of age, marital status or if a parent (approximately £5.39 per day)
- Extra money available for pregnant mothers and children under the age of three (£3 a week for pregnant mother; £5 a week for child under 1; £3 a week for child 1-3).
- **Section 4: Failed/ Appeal Rights Exhausted Asylum Seekers**
- £39.63 support a week per person – cashless.
- **Section 98: Temporary hotel accommodation (full-board)**
- £8.24 support a week per person.

# Refugees, asylum seekers and their entitlements

## Asylum seeker

- Has fled their country and is seeking sanctuary and outcome of asylum case not yet known
- Offered accommodation and weekly allowance of £39.63p.w
- No right to work (No NINO). May be able to apply for right to work after 12 months subject to the 'shortage occupation list'
- No right to public funds
- Access to education for children – limited access to education for adults
- Access healthcare via HC2
- Can volunteer for registered charities
- LegalAid to support their asylum claim
- **ID = ARC Card**

## Refugee

- A proven well-founded fear of being persecuted for reasons of race, religion, nationality, membership of a particular social group or political opinion.
- 28 days to vacate accommodation and cessation of financial allowance.
- Right to work.
- Usually (but not always) access to public funds.
- Time limited as refugee status – typically 5 years.
- **ID = BRP card**

# Useful Links

- <https://www.gov.uk/browse/visas-immigration/asylum>
- <https://www.gov.uk/government/statistics/immigration-statistics-year-ending-september-2020/summary-of-latest-statistics>
- <https://www.gov.uk/government/statistics/immigration-statistics-year-ending-september-2020/how-many-people-do-we-grant-asylum-or-protection-to>
- <https://www.refugeecouncil.org.uk/information/refugee-asylum-facts/>
- <https://migrationobservatory.ox.ac.uk/>
- [Data | Migration data portal](#)
- [Asylum quarterly report - Statistics Explained \(europa.eu\)](#)

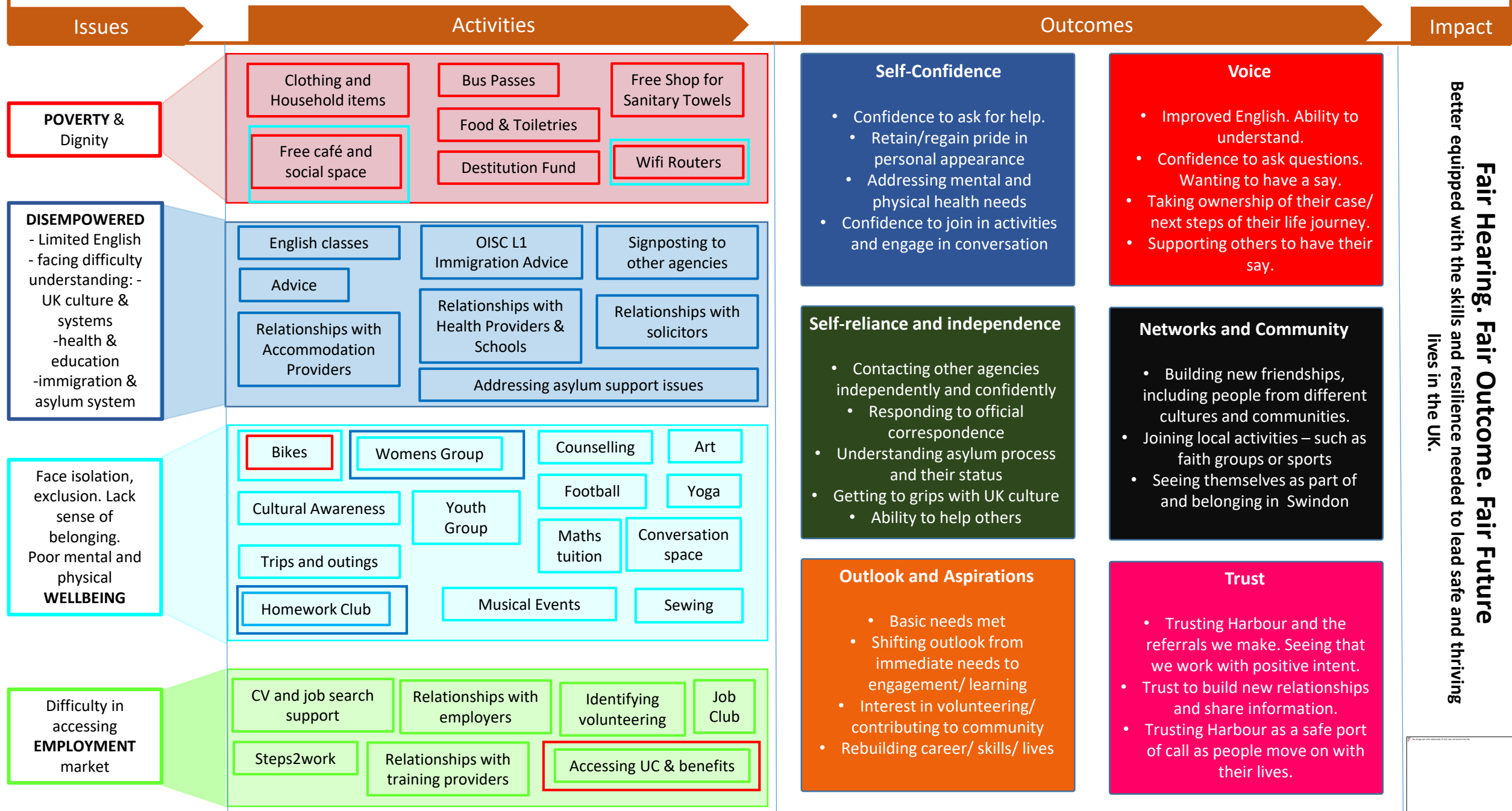
# Keeping in touch with The Harbour Project



THE  
**HARBOUR**  
PROJECT

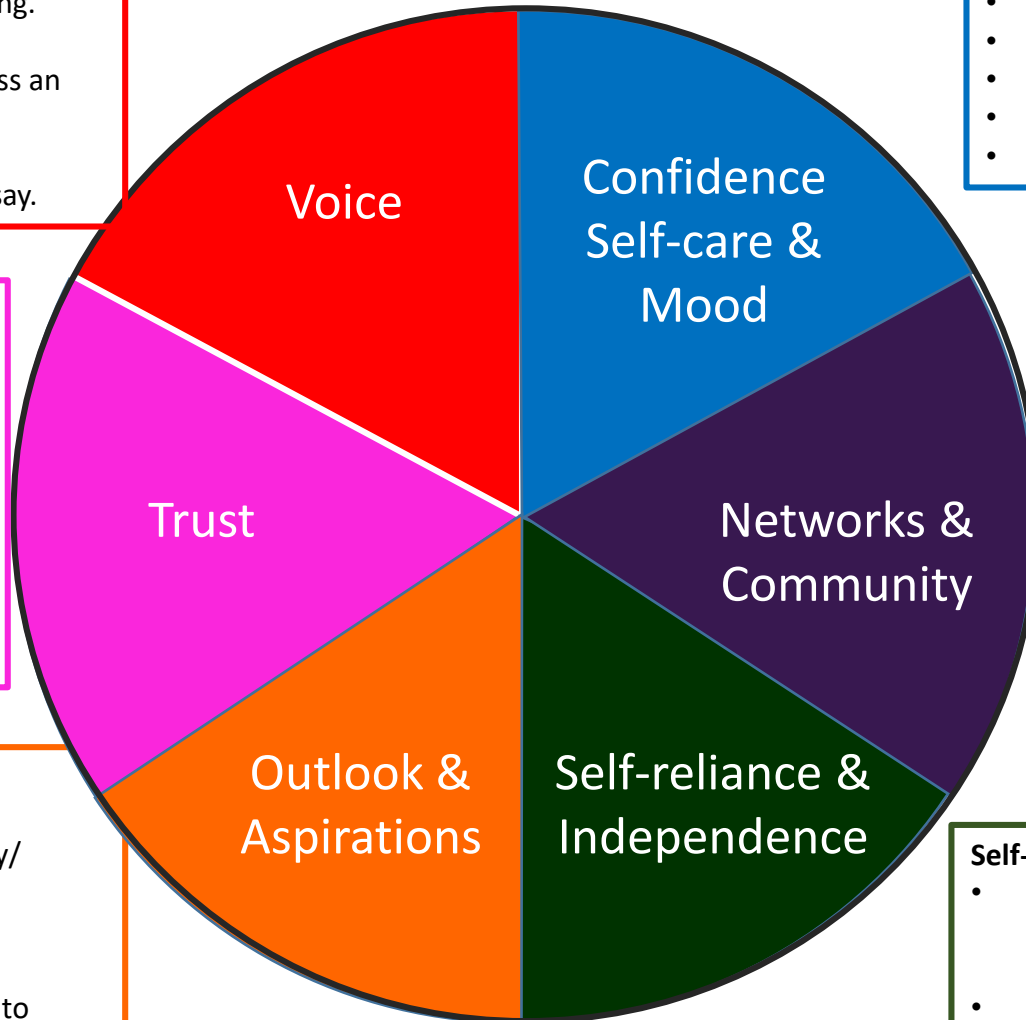


# The Harbour Project – Theory of Change



**Fair Hearing. Fair Outcome. Fair Future**  
 Better equipped with the skills and resilience needed to lead safe and thriving lives in the UK.

# Harbour Project – Outcome Wheel



## Voice

- English language skills. Ability to understand/ articulate questions/ ask if not understanding.
- Confidence to ask questions.
- Wanting to have a say. Confidence to express an opinion and offer feedback and ideas.
- Taking active ownership of their own case.
- Prepared to support others in having their say.

## Trust

- Trusting Harbour, who we are as people.
- Trusting that we work with positive intent – no agendas, favouritism or sharing information.
- Trust to share their story and information with us.
- Recognition of expertise of Harbour - seeking us out based on experience.
- Who they turn to at a time of need.

## Outlook & Aspirations

Time horizon of need & valuation of self-worth

- short-term = food/ accommodation/ money/ health
- Short/ medium term = wanting to learn/ engagement in activities
- Medium = 'I'm bored' – can I volunteer/ go to college/ get involved in something new/ worthwhile
- Longer term = rebuilding careers/ lives/ new skills

## Confidence, Self-care & Mood

- Confidence to contact Harbour and ask for help
- Confidence to engage in conversation
- Confidence to join in activities
- Personal presentation
- Interest in physical & emotional wellbeing.
- Anxiety/ stress/ anger/ concentration.

## Networks & Community

- Do they have friends? How many people do they know in Swindon?
- Have they been able to build a local support network – sport/ church & faith groups/ education.
- Are they learning to navigate the town and find people & places?
- Do they feel part of the community?
- Do they see themselves settling in Swindon?
- Have they been able to make friends from cultures/ communities different to their own?

## Self-reliance & Independence

- Do they know what other agencies to contact for help & how to find information? (eg, Housing Teams/ Migrant Help). Could they do this without our help?
- Do they understand official correspondence?
- Understanding asylum/ refugee process and their status
- Understanding of UK culture, protocols, legal system
- Ability/ confidence/ willingness to help others.